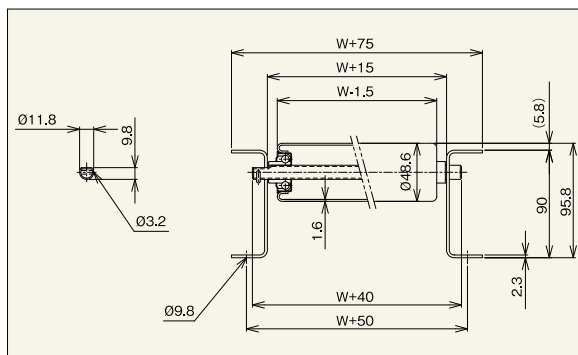


R-4814P



*The connector plate is an optional extra.



[Intended Application]
Conveying medium loads
[Product Characteristics]
1) Idler diameter is $\phi 48.6$, idler pitch is min. P50.
2) Idler width (nominal) is 100W-1,000W in standard increments of 50mm.
3) Pressed bearing, low-cost
4) [90 standard frame
Caution 1: Please indicate the connector plate (the connecting part between conveyors) separately when required.
Caution 2: If the idler pitch (P) is not cleanly divisible, then a suitable pitch (P) will be chosen.

Unit Width / Idler Strength / Standard Weight

Idler Width (Nominal) W (mm)	100	200	300	400	500	600	700	800	900	1,000
Unit Width W+75 (mm)	175	275	375	475	575	675	775	875	975	1,075
Strength of One Idler (kg)	175	168	147	109	87	72	62	54	48	43
Conveyor Standard	75P	30.1	39.0	47.8	56.7	65.5	73.3	82.2	91.3	100.3
Weight 3,000L (kg)	100P	26.7	33.4	40.1	46.9	53.6	59.3	66.2	73.1	80.0
Idler / Shaft Standard Weight (g)	347	558	767	978	1,188	1,399	1,607	1,820	2,029	2,242

Caution 1. Idler strength has been calculated using the standard specifications of our company's standard conveyors and shafts. Please take care if you are providing your own shafts or frame.
Caution 2. The strength changes according to the conditions of use (whether there is impact or not). The values given in the chart are approximate values, and are not guaranteed.

Idler Unit Specifications

Conveyor Model	Idler Unit Model	Idler Dimensions			Idler Width				Free Size	Idler Specifications			Bearing
		Outer Diameter (ϕ)	Wall Thickness (t)	Shaft Indent (ϕ)	Standard Idler Width (Nominal) W	Standard Full Idler Length BB	Possible Width			Material	Surface Treatment	Specifications	
							Minimum Width (W)	Maximum Width (W)					
R-4814P	R-4814P	48.6	1.6	12.2	100 - 1,000	W+13	100	1,000	50mm Incred.	STKM	Molten zinc plating	Pressed	

Standard Shaft Specifications

Nominal Diameter (Actual Diameter) x Thickness (ϕ)	Wall Thickness (t)	Shaft Length (mm)	Shape	Finish	Material	Plating
12 (11.8) x 1.0	W+40	Pipe	Circular/Horizontal crescent pin hole	STKM11A	X	

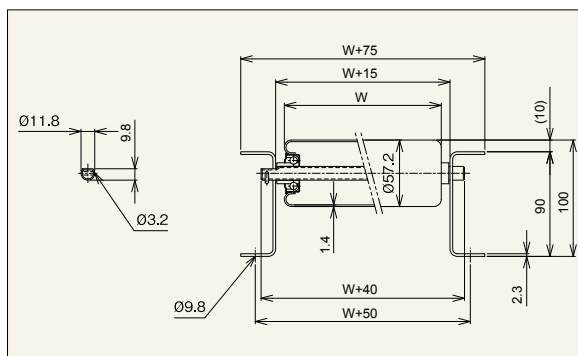
Idler Conveyor Specifications

Frame Specifications			Manufactured Range of Standard Lengths				Standard Idler Pitch	Unit Height (Idler Upper Surface) H	
Height x Width x Wall Thickness l x K x t	Material	Surface Treatment	Unit Length L						
			1,000	1,500	2,000	3,000	R900 Inner Curve	Pitch P	
[90x30x2.3	Steel	Baked-on coating	Y	Y	Y	Y	Y	50 / 75 100 / 150	95.8

R-5714P



*The connector plate is an optional extra.



[Intended Application]
Conveying medium loads
[Product Characteristics]
1) Idler diameter is $\phi 57.2$, idler pitch is min. P75.
2) Idler width (nominal) is 100W-1,000W in standard increments of 50mm.
3) Most versatile for conveying medium loads.
4) Pressed bearing, low-cost, best-selling $\phi 57$ product.
5) [90 standard frame
Caution 1: Please indicate the connector plate (the connecting part between conveyors) separately when required.
Caution 2: If the idler pitch (P) is not cleanly divisible, then a suitable pitch (P) will be chosen.

Unit Width / Idler Strength / Standard Weight

Idler Width (Nominal) W (mm)	100	200	300	400	500	600	700	800	900	1,000
Unit Width W+75 (mm)	175	275	375	475	575	675	775	875	975	1,075
Strength of One Idler (kg)	175	168	147	109	87	72	62	54	48	43
Conveyor Standard	75P	31.7	40.8	49.9	59.1	68.2	76.3	85.6	94.9	104.2
Weight 3,000L (kg)	100P	27.8	34.8	41.7	48.7	55.7	61.5	68.7	75.8	83.0
Idler / Shaft Standard Weight (g)	385	603	820	1,038	1,256	1,474	1,690	1,910	2,127	2,347

Caution 1. Idler strength has been calculated using the standard specifications of our company's standard conveyors and shafts. Please take care if you are providing your own shafts or frame.
Caution 2. The strength changes according to the conditions of use (whether there is impact or not). The values given in the chart are approximate values, and are not guaranteed.

Idler Unit Specifications

Conveyor Model	Idler Unit Model	Idler Dimensions			Idler Width				Free Size	Idler Specifications			Bearing
		Outer Diameter (ϕ)	Wall Thickness (t)	Shaft Indent (ϕ)	Standard Idler Width (Nominal) W	Standard Full Idler Length BB	Possible Width			Material	Surface Treatment	Specifications	
							Minimum Width (W)	Maximum Width (W)					
R-5714P	R-5714P	57.2	1.4	12.2	100 - 1,000	W+13	100	1,000	50mm Incred.	STKM11A-S	Molten zinc plating	Pressed	

Standard Shaft Specifications

Nominal Diameter (Actual Diameter) x Thickness (ϕ)	Wall Thickness (t)	Shaft Length (mm)	Shape	Finish	Material	Plating
12 (11.8) x 1.0	W+40	Pipe	Circular/Horizontal crescent pin hole	STKM11A	X	

Idler Conveyor Specifications

Frame Specifications			Manufactured Range of Standard Lengths				Standard Idler Pitch	Unit Height (Idler Upper Surface) H	
Height x Width x Wall Thickness l x K x t	Material	Surface Treatment	Unit Length L						
			1,000	1,500	2,000	3,000	R900 Inner Curve	Pitch P	
[90x30x2.3	Steel	Baked-on coating	Y	Y	Y	Y	Y	75 / 100 150 / 200	100