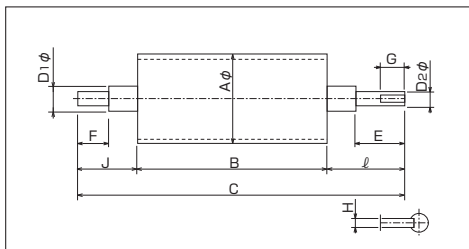
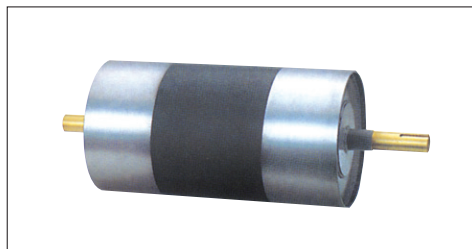
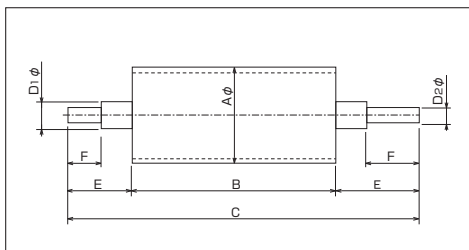
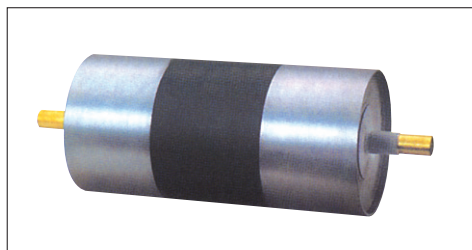


# 溶接ローラ

## ■ヘッドプーリ

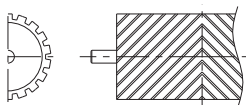


## ■テールプーリ

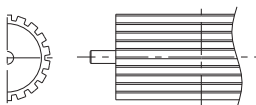


## ■各種プーリ加工

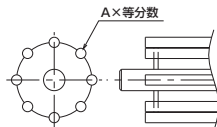
### Wヘリカルライニング



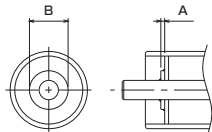
### スーパーライニング



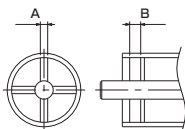
### カゴ型プーリ [RB]



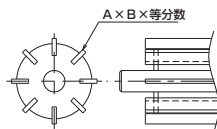
### W側板補強



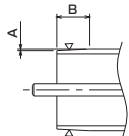
### 十字リブ補強



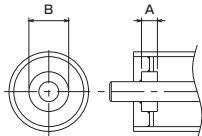
### カゴ型プーリ [FB]



### クラウン加工



### ボス仕様



### ボスキー仕様

